

SANTAK® PDU

SANTAK rack mounted power distribution units PDU

Build a safe and reliable power
distribution environment in
IT rack

WHAT DOES SANTAK PDU BRING TO ITS CUSTOMERS?

As the last device of power distribution chain, the PDU has the closest link with your equipment. Once it goes wrong, the consequences are so severe that there is no way to fix it. It's even more important than front-end distribution device. Santak PDU focuses on establishing a more secure and reliable environment, providing favorable support for efficient and stable operation of the IT room.

Application Scenarios: Construction site, Laboratory, IT room, Plant workshop.generator input. It applies to the environment with bad power quality.



SPECIFICATION

Serial No.	Model	Rated Capacity	Output sockets	SPD/ Switch	Installation method	Input connection
1	S-BPWY8P	10A / 2500W	7* 10A Universal	SPD and Switch	Horizontal / Vertical	10A NEMA Plug with 2 meters power cord
2	S-BPWY8S	10A / 2500W	8* 10A Universal	Switch	Horizontal / Vertical	10A NEMA Plug with 2 meters power cord
3	S-BPWY8	10A / 2500W	8* 10A Universal	None	Horizontal / Vertical	10A NEMA Plug with 2 meters power cord

GUARANTEED SAFETY OUTPUT



Phosphor bronze shrapnel

High-quality phosphor bronze chip featuring good conductivity and strong heat dissipation is used within the jack



Engineering plastics with high temperature resistance

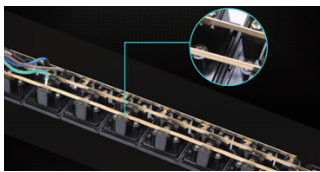
Plastic materials are resistant to high temperature above 120 degrees without being deformed



Designed with 50N insertion force

No loosening or ignition up to 10000 times of insertion

4 MAJOR SECURITY GUARANTEES



One-piece core copper conductor

One-piece core copper strip is used for the inner conductor to avoid breakpoint failure; Large cross-sectional area and low resistance lead to higher conductivity, and is thus energy saving and safe.



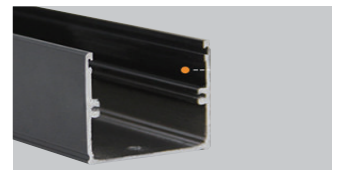
Certified plug

The power cord and plug safe and reliable and flexible.



10kA Surge protection Device (SPD)

Professional surge protection to withstand 10KA current surge

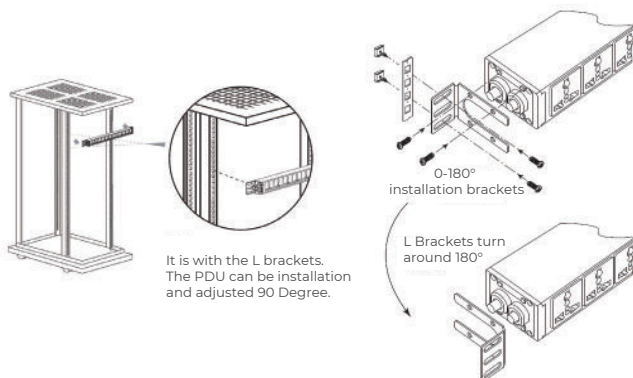


Integrated aluminum alloy shell

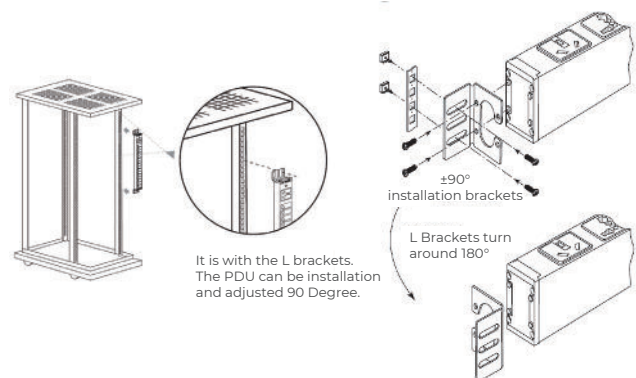
Fabricated through 20 processes and 80 working procedures, the aluminum alloy has exquisite appearance and excellent texture

PDU INSTALLATION MODE

Horizontal installation, only for 1U PDU



Vertical installation for PDU of any size



SANTAK ELECTRONIC (SHENZHEN) CO., LTD.

Shenzhen, P.R. China
Address: No. 8 Baoshi Road, Baoan
District, Shenzhen, 518101

Tel: 0086 755 27572666
Fax: 0086 755 27572730 (27572480)
Email: santakexport@santak.com

Website: www.santak.com

July. 2021