

# WinpowerG2 quick start

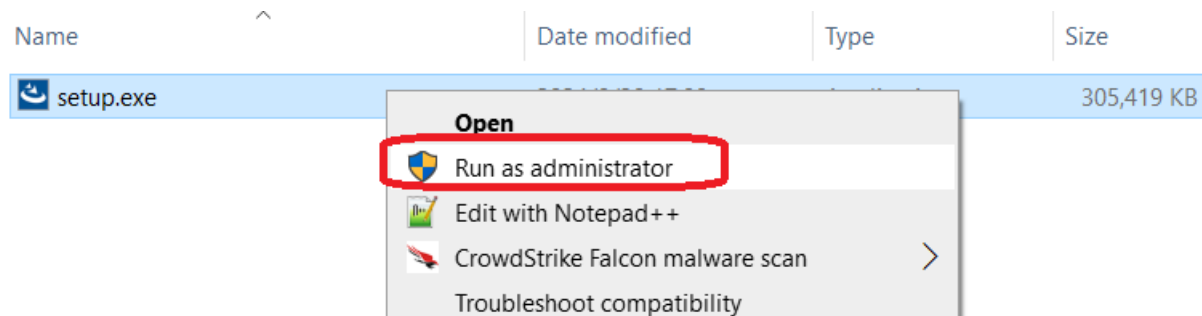
## Contents

1.	Windows OS.....	1
1.1	Installation.....	1
1.2	Start/Stop Service.....	3
1.3	Uninstall.....	4
2.	Linux OS .....	4
2.1	Installation.....	4
2.2	Start/Stop Service.....	8
2.3	Uninstall.....	9
3.	Mac OSX.....	9
3.1	Installation.....	9
3.2	Start/Stop Service.....	12
3.3	Uninstall.....	13
4.	Quickly Start.....	14
4.1	Add UPS Devices .....	14
4.2	Local shutdown function.....	14
4.3	Language.....	16
4.4	On-Line help.....	17

## 1. Windows OS

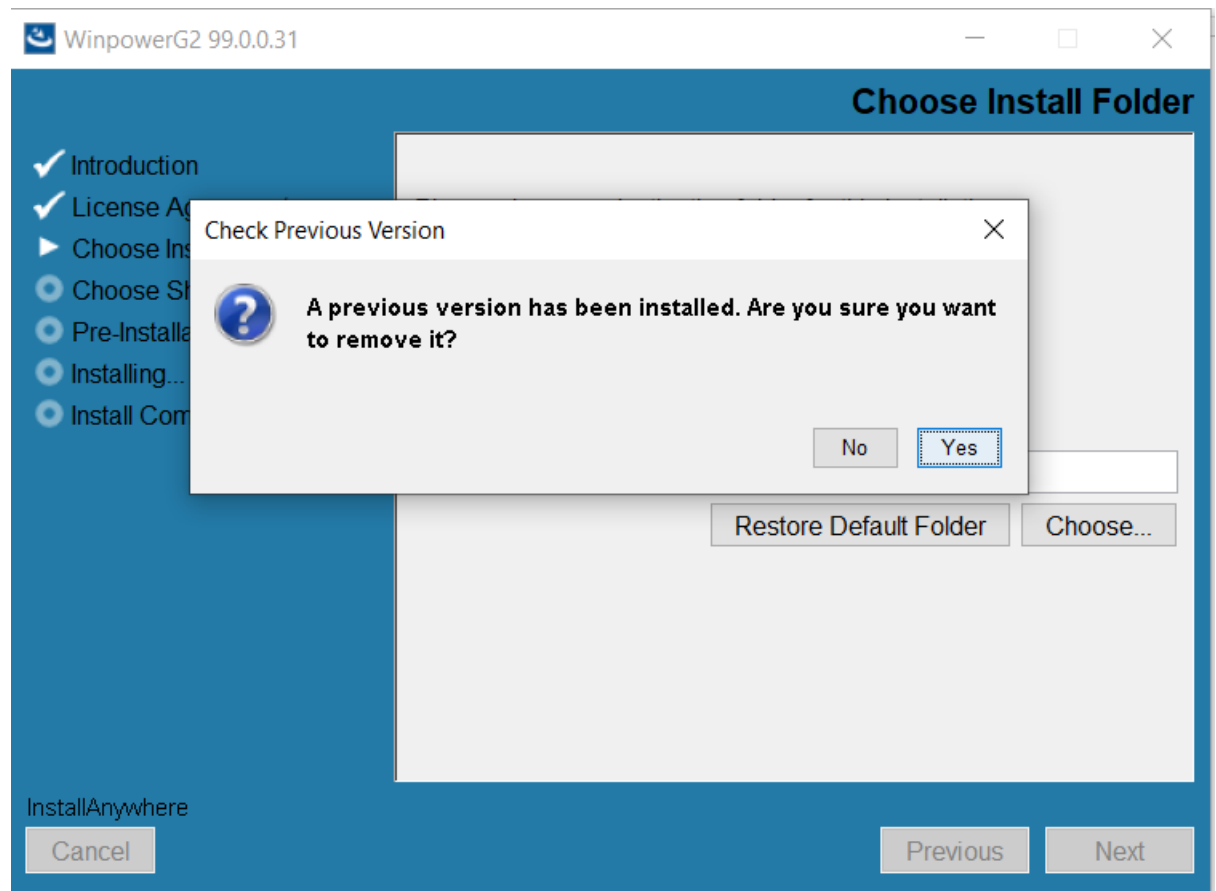
### 1.1 Installation

- Extract “WinpowerG2\_setup\_Windows.zip” installer file.  
Right click “setup.exe”, choose “Run as administrator”, install software with administrator privilege.

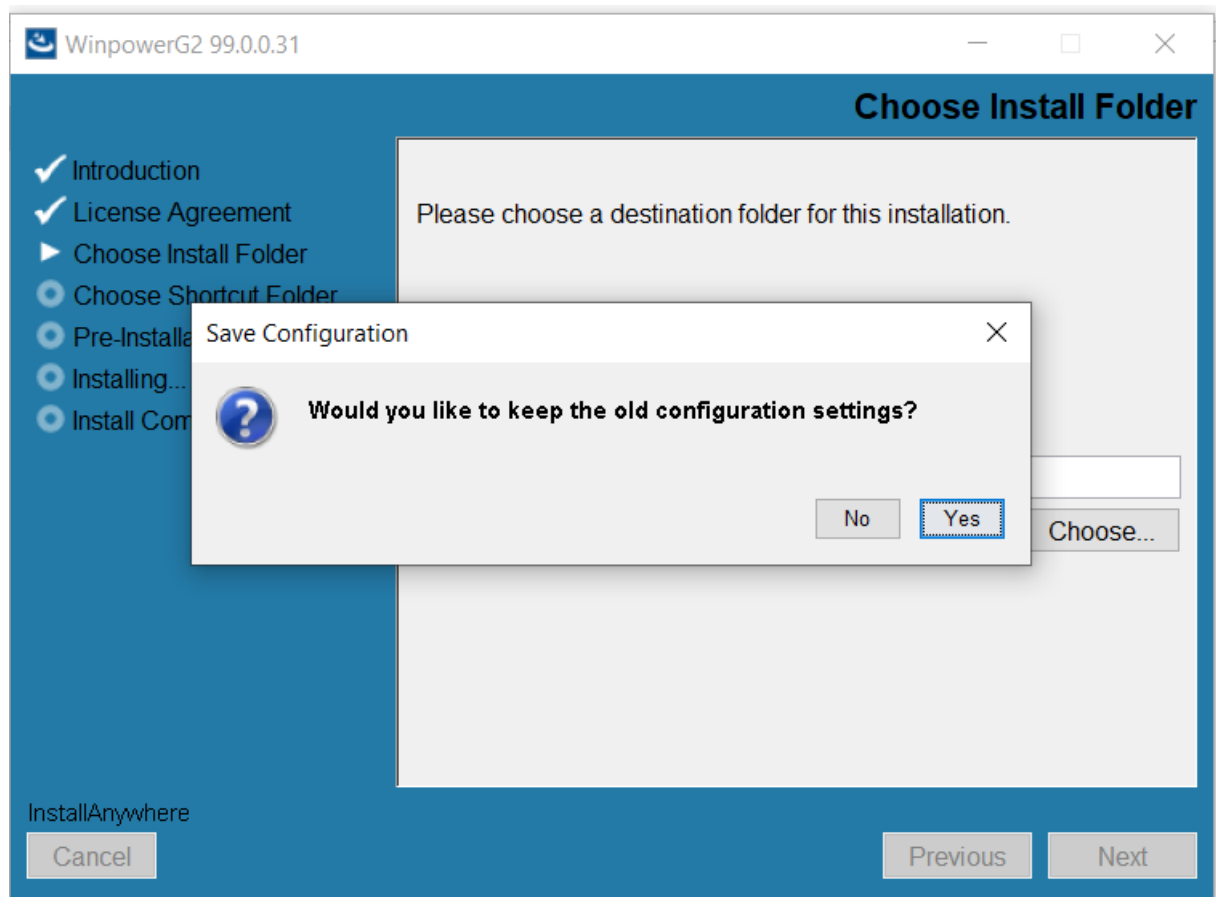


- Follow the prompts to complete all installation steps. If an older version is detected on the system, it will prompt “Are you sure you want to remove it”, Click “Yes” to

uninstall the old version, click “No” to exit the installation.

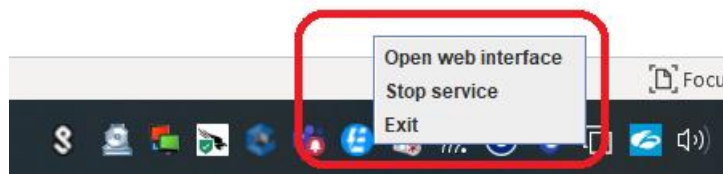


- After selecting “Yes”, it will prompt “Would you like to keep the old configuration setting”. If you choose “Yes”, the old database and configuration will be retained. If you choose “No”, all data will be deleted.

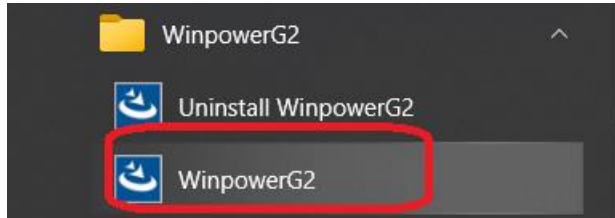


## 1.2 Start/Stop Service

- After installing Winpower, the service will automatically start, and a tray icon will appear in the bottom of the computer taskbar as shown in the figure below. Right click the tray icon can open the website, stop the service, or exit software completely.  
Note: Winpower service will start automatically with the system reboot, while the tray icon will start automatically after the user logging in.

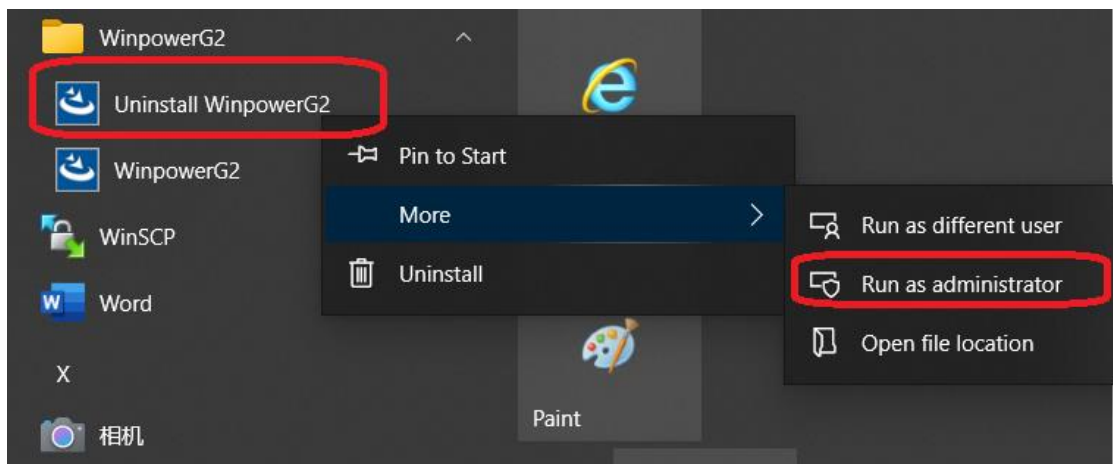


- Once exit software, you can restart the tray icon and service via shortcuts from desktop or program menu.



### 1.3 Uninstall

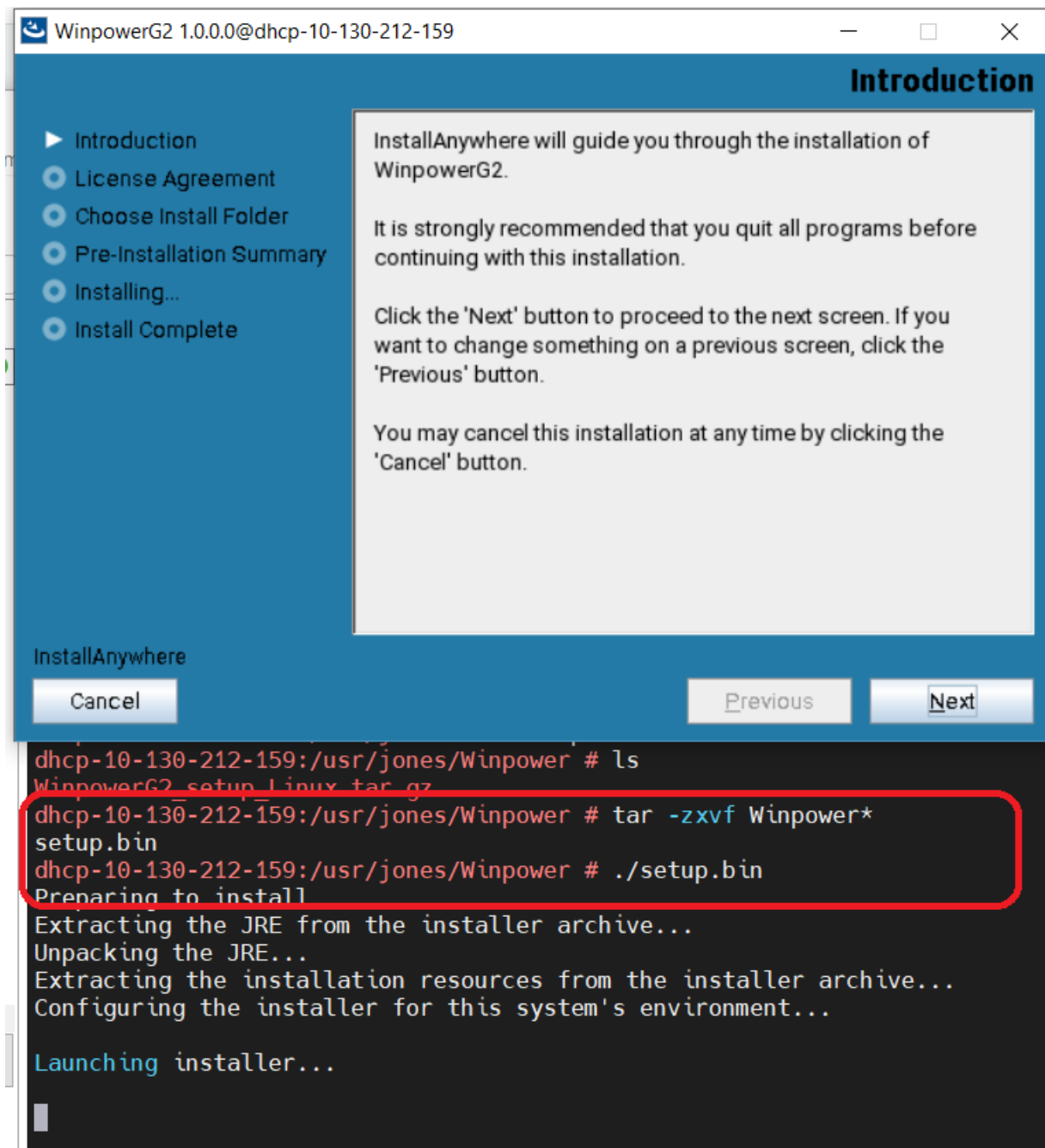
- Open program menu, choose “Uninstall WinpowerG2”, Click “Run as administrator”, and uninstall software with administrator privileges.



## 2. Linux OS

### 2.1 Installation

- On Linux systems, run the command “tar -zxvf Winpower\*.tar.gz” to extract installer file.
- If you are root user, run the command “./setup.bin” for installation.  
If you are non-root user, run the command “sudo ./setup.bin” for installation.  
Follow the prompts on the graphical interface to complete the installation.



- If logging into Linux with text mode, no graphical interface will pop up for installation. Text message will appear as shown as following image. Please follow the text prompts to complete the installation.

```
root@localhost/usr/jones/WinpowerG2
login as: root
root@10.130.212.250's password:
Activate the web console with: systemctl enable --now cockpit.socket

Last login: Mon Sep  2 14:20:46 2024 from 10.235.180.231
[root@localhost ~]# cd /usr/jones/WinpowerG2
[root@localhost WinpowerG2]# ls
setup.bin
[root@localhost WinpowerG2]# ./setup.bin
Preparing to install
Extracting the JRE from the installer archive...
Unpacking the JRE...
Extracting the installation resources from the installer archive...
Configuring the installer for this system's environment...

Launching installer...


Graphical installers are not supported by the VM. The console mode should be used instead...

=====
WinpowerG2                                     (created with InstallAnywhere)
=====

Preparing CONSOLE Mode Installation...

=====
Introduction
-----

InstallAnywhere will guide you through the installation of WinpowerG2.
```

 root@localhost:/usr/jones/WinpowerG2

```
-----  
Preparing CONSOLE Mode Installation...
```

```
-----  
Introduction  
-----
```

InstallAnywhere will guide you through the installation of WinpowerG2.

It is strongly recommended that you quit all programs before continuing with this installation.

Respond to each prompt to proceed to the next step in the installation. If you want to change something on a previous step, type 'back'.

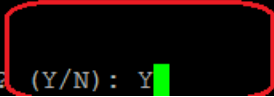
You may cancel this installation at any time by typing 'quit'.

PRESS <ENTER> TO CONTINUE:

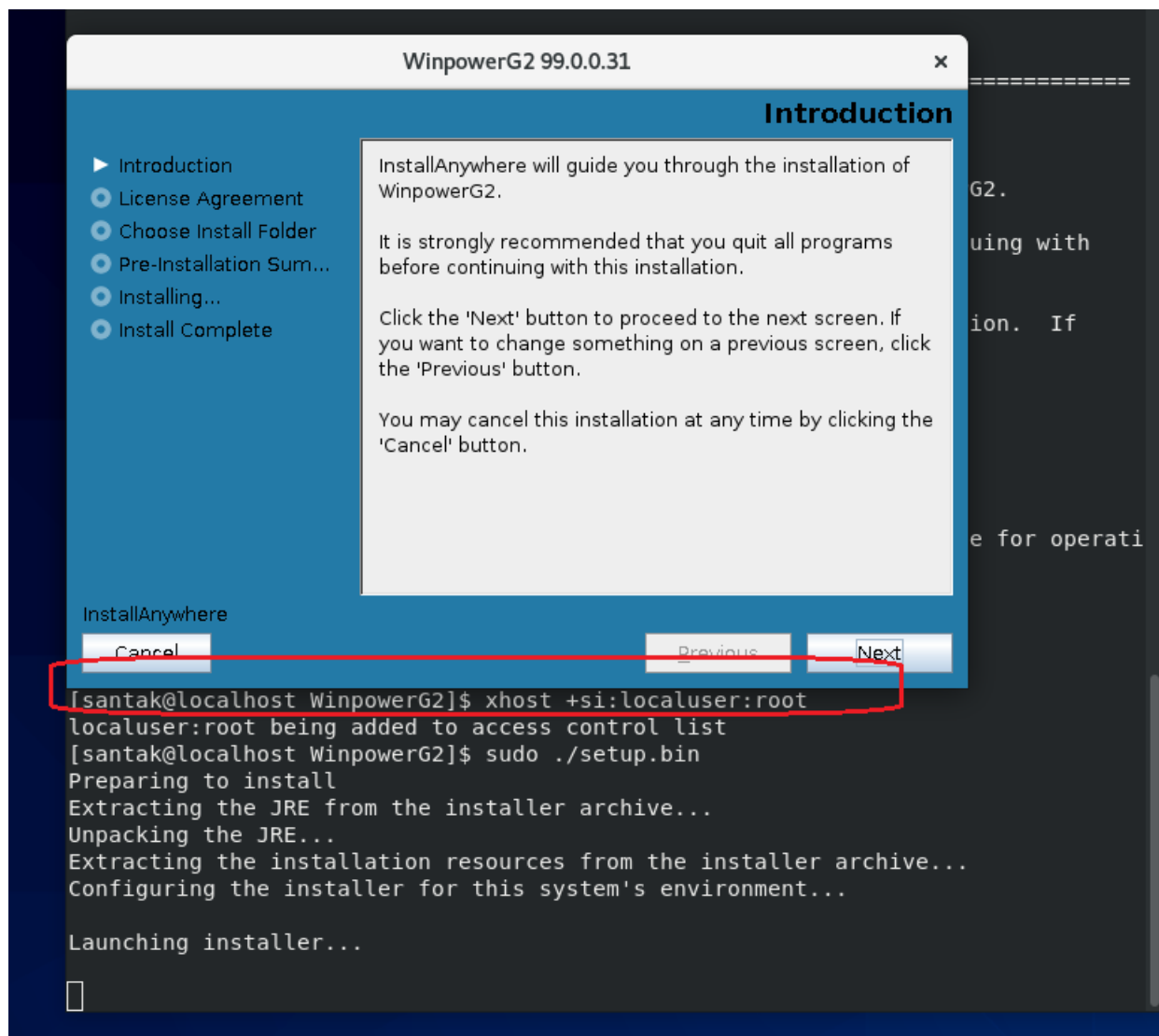
```
-----  
License Agreement  
-----
```

Installation and Use of WinpowerG2 Requires Acceptance of the Following License Agreement:

Need to Complete

DO YOU ACCEPT THE TERMS OF THIS LICENSE AGREEMENT? (Y/N): Y 

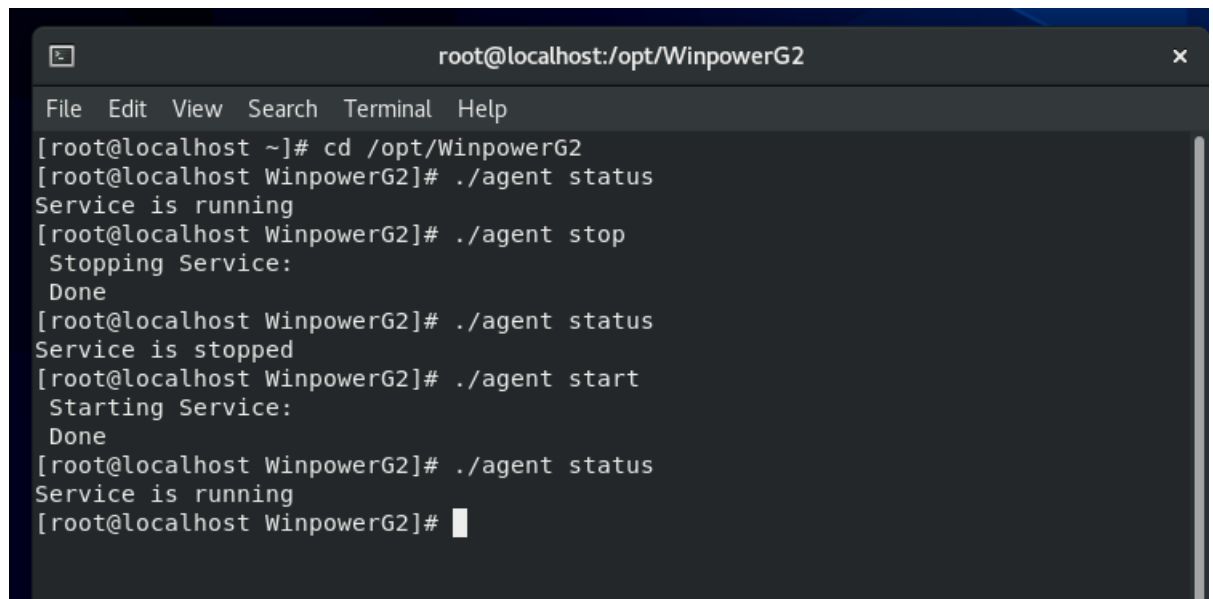
- On some Linux systems, If you need to install in graphical mode for non-root user, please enter the command "xhost +si:localuser:root".



## 2.2 Start/Stop Service

- Use the following command to start/stop/check the service. Add "sudo" for non-root user.  
Enter to installation directory via "cd /opt/WinpowerG2" command.  
Check service status: ./agent status  
Stop service status: ./agent stop  
Start service status: ./agent start



A terminal window titled 'root@localhost:/opt/WinpowerG2' with a menu bar (File, Edit, View, Search, Terminal, Help). The terminal shows the following commands and output:

```
[root@localhost ~]# cd /opt/WinpowerG2
[root@localhost WinpowerG2]# ./agent status
Service is running
[root@localhost WinpowerG2]# ./agent stop
Stopping Service:
Done
[root@localhost WinpowerG2]# ./agent status
Service is stopped
[root@localhost WinpowerG2]# ./agent start
Starting Service:
Done
[root@localhost WinpowerG2]# ./agent status
Service is running
[root@localhost WinpowerG2]#
```

- Winpower service will start automatically with system reboot.  
Note: Winpower don't support tray icon for Linux OS

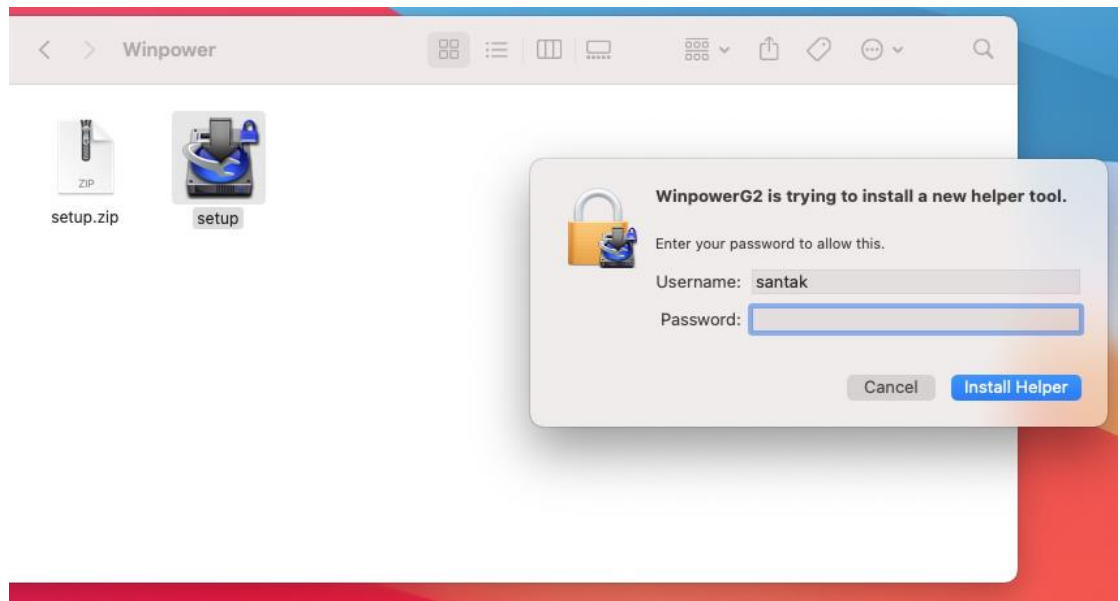
## 2.3 Uninstall

- Go to the Winpower installation directory and use the command `./Uninstall` to uninstall software. If you are non-root user, use the command `sudo ./Uninstall`.

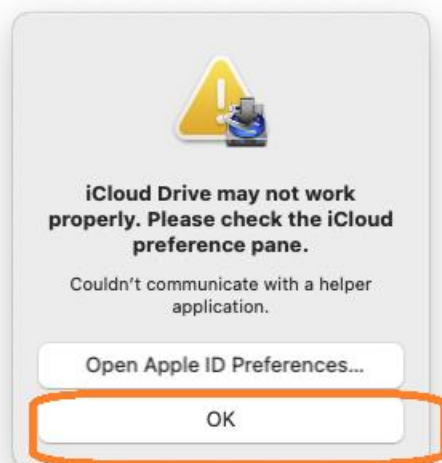
# 3. Mac OSX

## 3.1 Installation

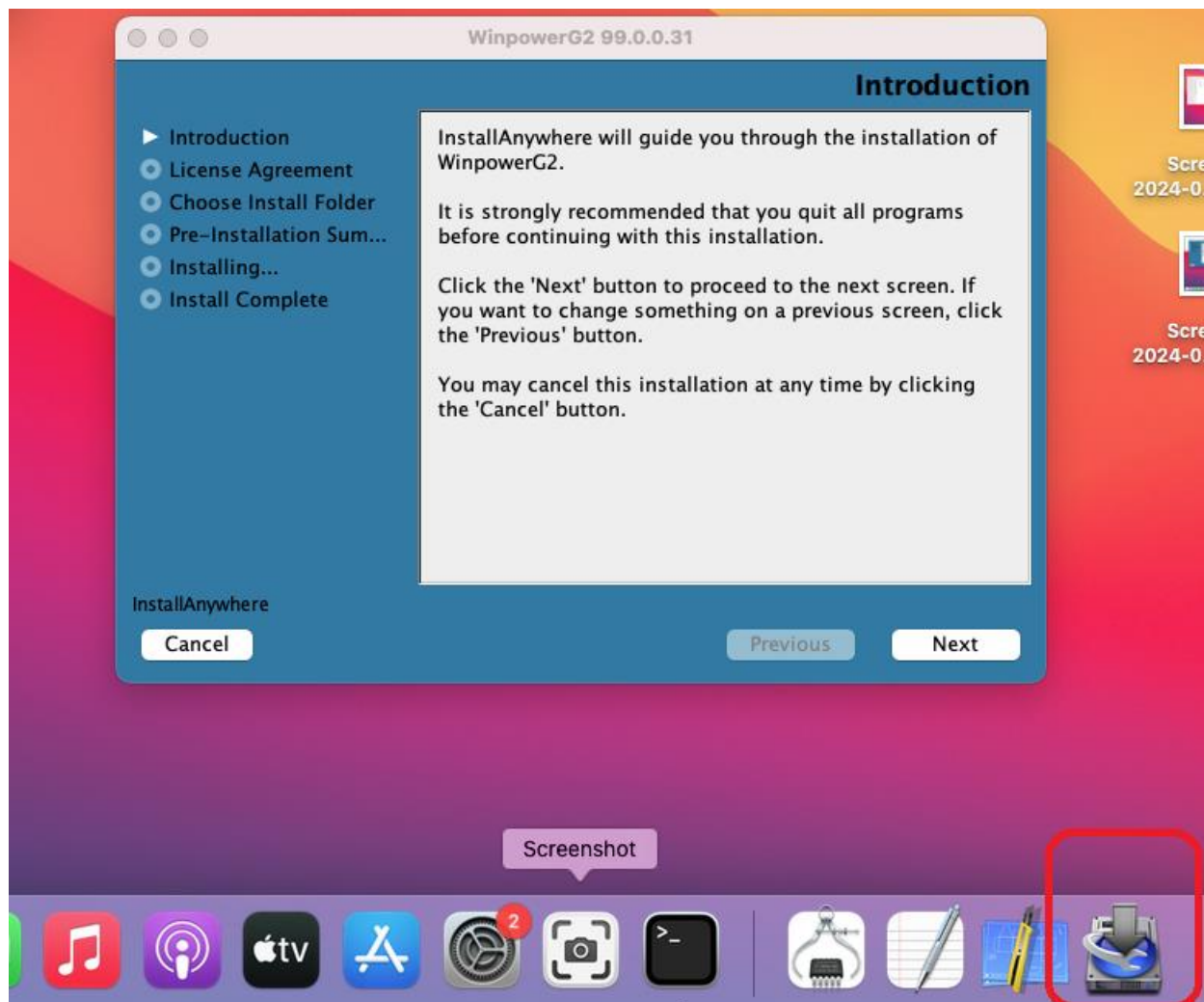
- Double click "WinpowerG2\_setup\_MacOSX.zip" to extract the file. Double click "setup" and enter the password of current user.  
Note: Some Mac OSX do not have "Rosetta" installed by default, so you need to connect your Mac OSX to the internet. Double click "setup", it will prompt you to install "Rosetta". Follow the prompts to complete the installation of "Rosetta" firstly.



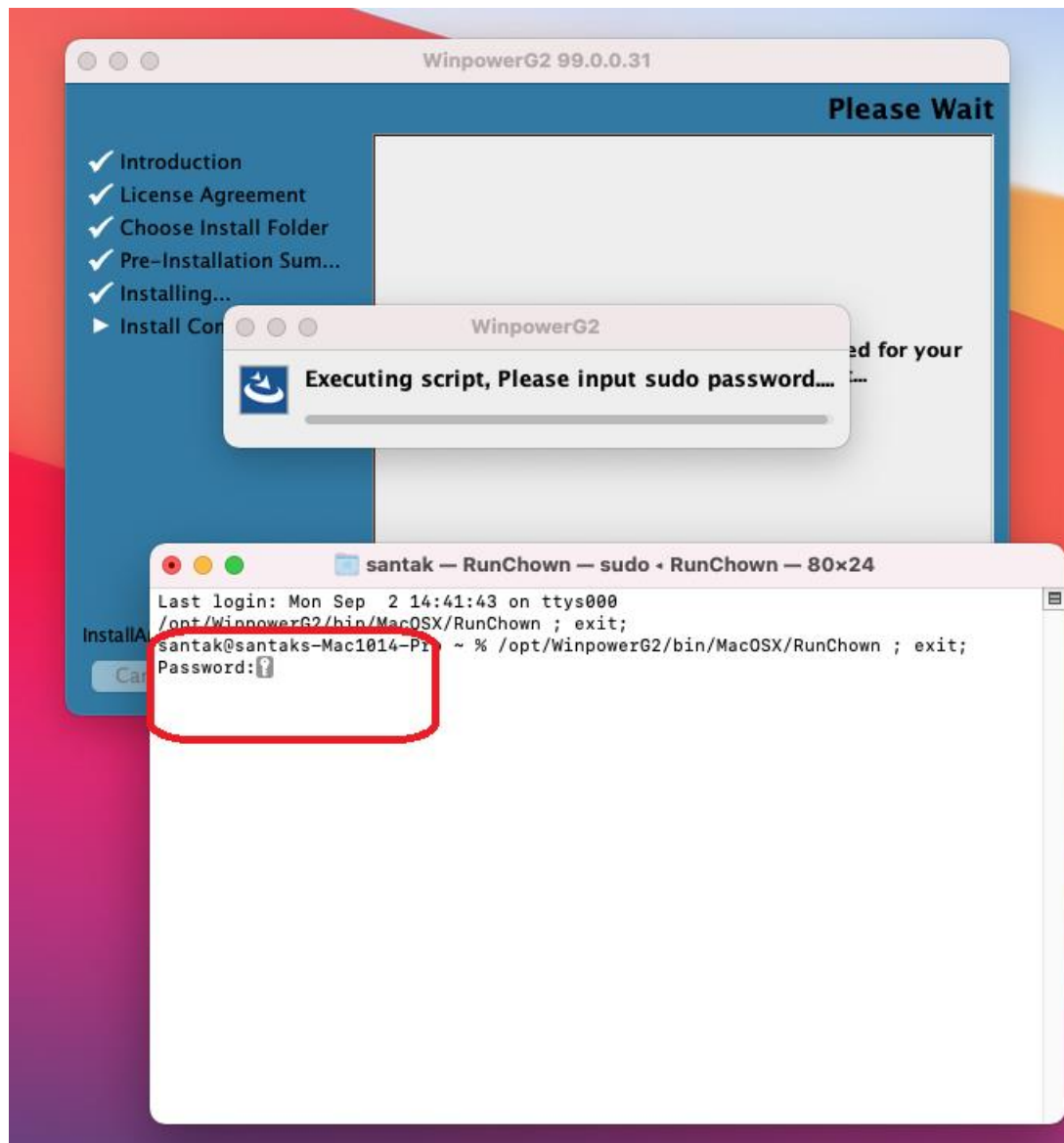
- After entering the password, if following message pops up, please select "OK".



- A small icon will appear on the taskbar as shown in the following image. Wait for several seconds, installation interface will pop up.

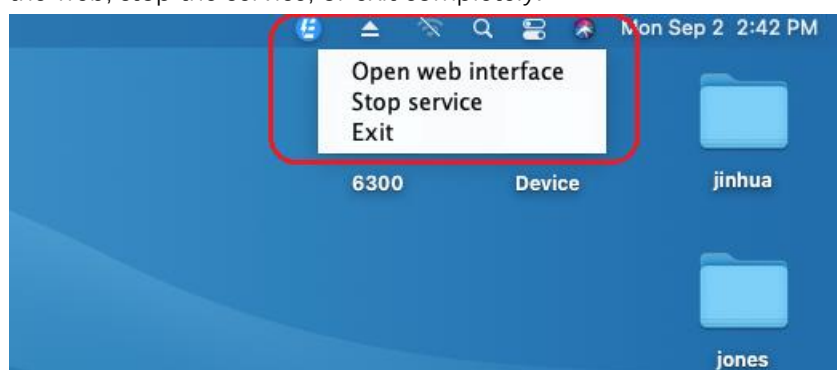


- After installation, it is necessary to execute the script to complete the configuration, so root privilege is required. Please enter the root password.

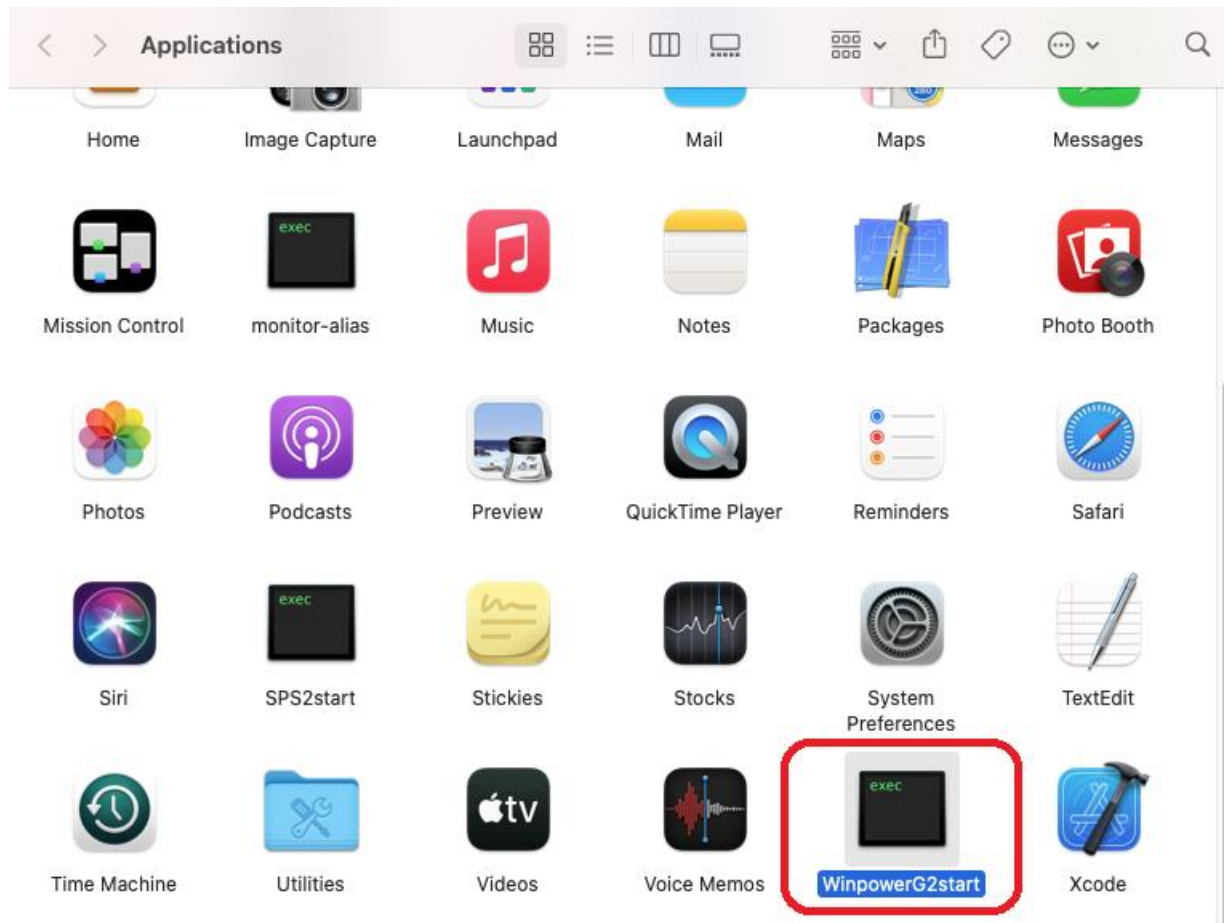


### 3.2 Start/Stop Service

- After installation, Winpower service and tray icon will automatically start. The tray icon will appear in the upper right corner. Right click the tray icon can open the web, stop the service, or exit completely.



- Once software exited, you can click "WinpowerG2start" under the Applications directory to start the service and tray icon quickly.



- Service can also be stopped/started via commands as following commands.  
Enter the installation directory of Winpower: `cd /opt/WinpowerG2`  
Check Winpower service: `./agent status`  
Stop Winpower service: `./agent stop`  
Start the Winpower service: `./agent start`  
Start Winpower tray icon: `./agent console`  
Exit Winpower: `./agent exit`

- After user logging in, the service and small icon will be started automatically.

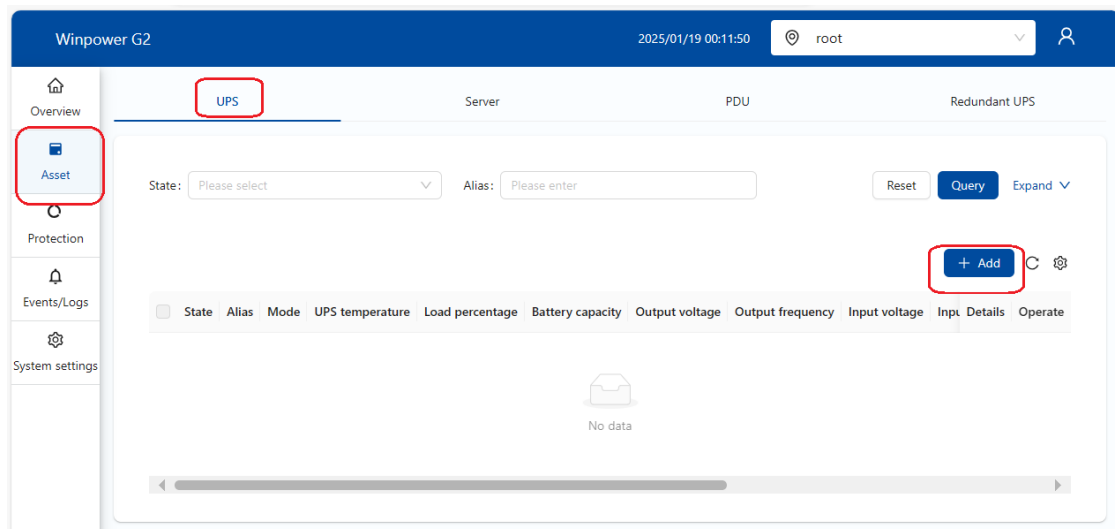
### 3.3 Uninstall

- Go to the installation directory "/opt/WinpowerG2" and enter the command "sudo ./Uninstall " to uninstall Winpower.

## 4. Quickly Start

### 4.1 Add UPS Devices

- Open web via "<https://<Host IP>:8081>"  
The default username and password are "admin/admin". Software will require user to modify password for first login.
- Click "Asset"->"UPS"->"Add", add UPS devices



- You can choose different protocols to add corresponding UPS devices.

#### Search for adding devices

1 Select device type — 2 Select communication proto 3 Search complete

Device type: ☒ UPS ☐ Server ☐ PDU

\* Communication protocol:

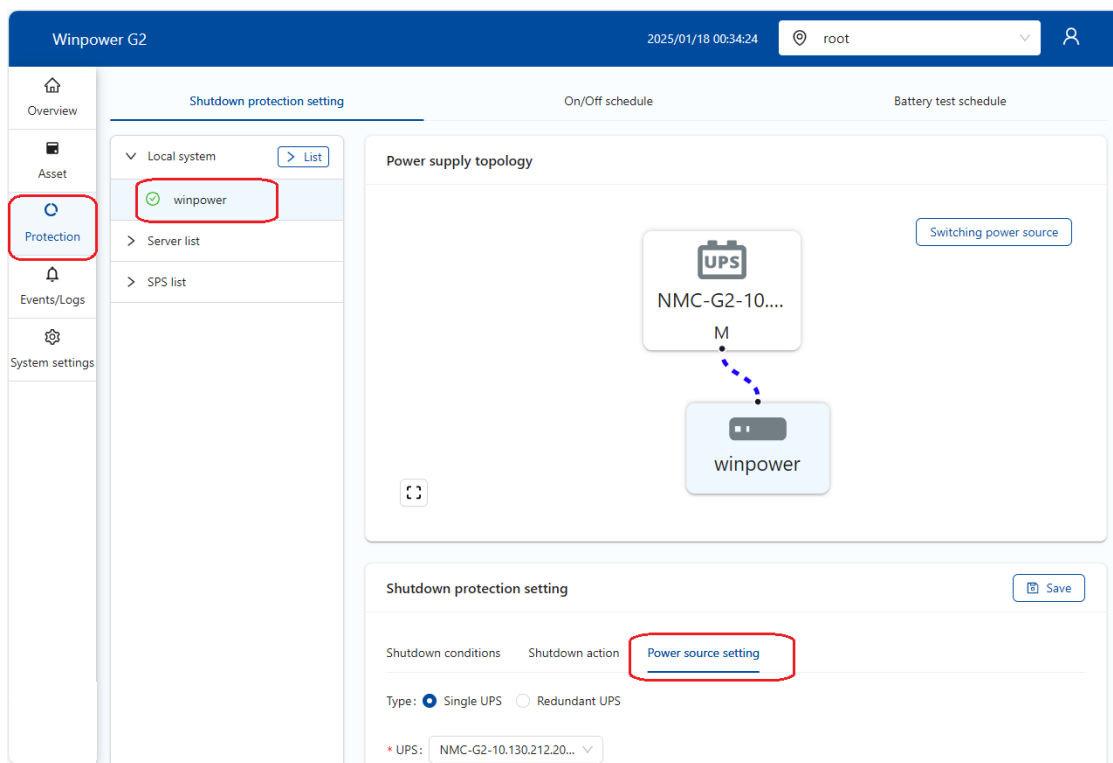
\* Site:

- Serial port/USB
- NMC G2
- SNMP
- Modbus Tcp

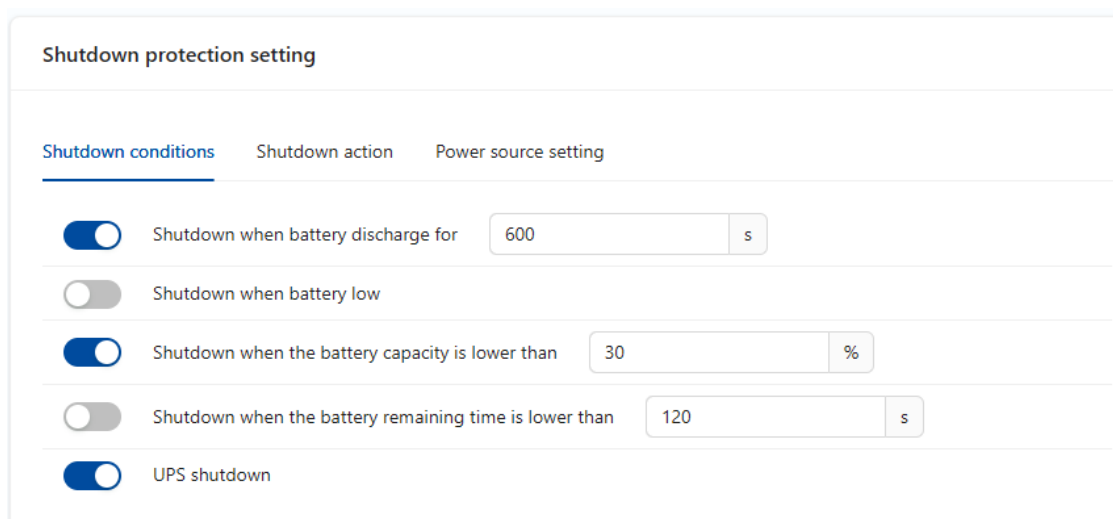
### 4.2 Local shutdown function

- Click "Protection"->"Local System"->"winpower"->"Power source setting". Select

the corresponding UPS as the power source and click Save button.



- Click “Shutdown conditions”, Set the shutdown trigger conditions and save.
- As shown in the figure below, set shutdown conditions to “battery discharge for 600 seconds” and “battery capacity is lower than 30%”. Any of condition is met, the shutdown action will be triggered.
- “UPS shutdown” is applicable to the following two situations:
1. If software communicates with the power source through USB/RS232/Modbus TCP, when the scheduled shutdown time is reached, the shutdown action will be triggered.
  2. If software communicates with the power source through NMCG2 card, when the UPS enter to shutdown count down, the card will push shutdown notification to software, then software will trigger the shutdown action.



- Click “Shutdown action” to set shutdown protection action.

You can set following actions:

- Execute script before shutdown or hibernation.
- Shut down OS.
- Hibernate OS.
- UPS shutdown.

“UPS shutdown” means “turn off UPS output”. It is only applied to the power source that is communicated with software through USB/RS232/Modbus TCP. If the “UPS shutdown” is enabled, once the shutdown condition is met and the script execution has been completed, software will send a shutdown command to UPS with the delay time of "Execution time". If the power source is communicated with software through cards, UPS output will be shut down by card side not by software, so this option will be disabled.

#### Shutdown protection setting

Shutdown conditions
Shutdown action
Power source setting

☐ Shutdown script

Please selectShutdown ...

Script execution time 60 s

Script execution method
☒ Service
☐ Non service

Test

View script execution log

☒ System shutdown
☒ Shutdown
☐ Hibernate

Execution time 2 mins

Test

☐ UPS shutdown

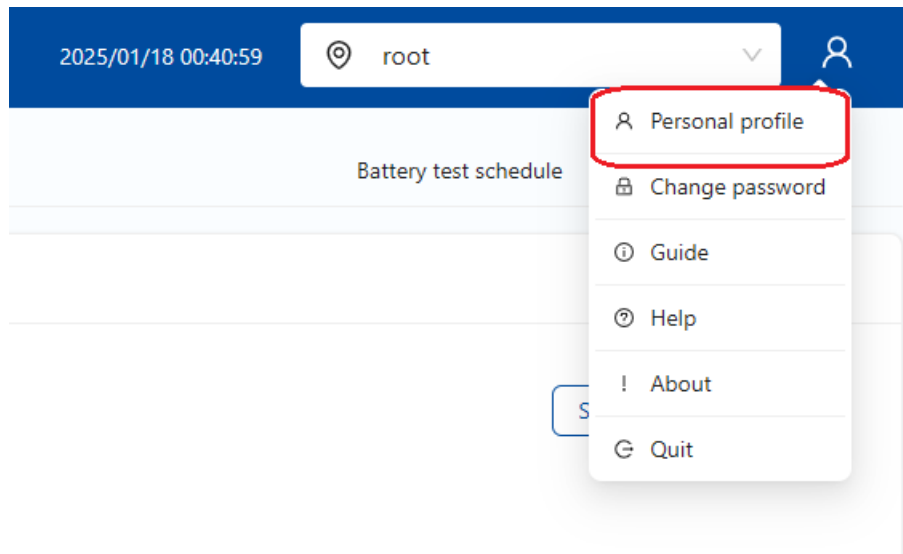
- OS shutdown/hibernation commands sending by software.

System	Shutdown	Hibernate
Windows	<b>shutdown -s -f</b>	<b>shutdown -h -f</b> If the hibernate is off, turn on it by the command: <b>powercfg /hibernate on</b>
Linux	<b>shutdown -P now</b>	<b>systemctl suspend</b>
Mac OSX	call dll	call dll

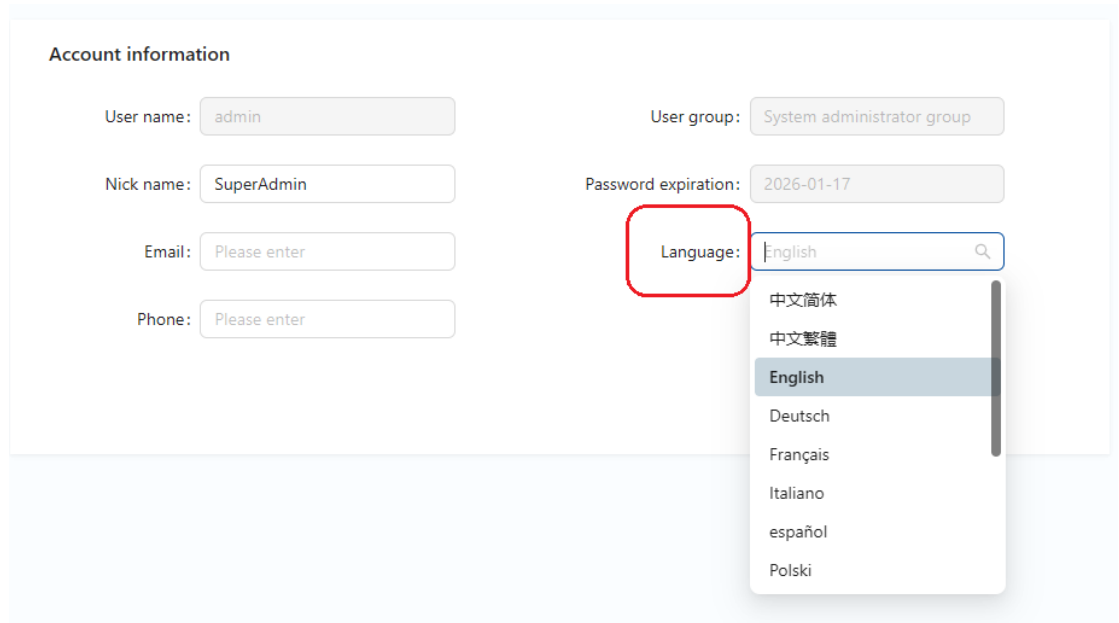
## 4.3 Language

- Click “Personal profile”.





- Choose the language.



#### 4.4 On-Line help

- Click "Help", View more usage instructions.

2025/01/18 00:53:36

root



Personal profile

Change password

Guide

Help

About

Quit

Battery test s